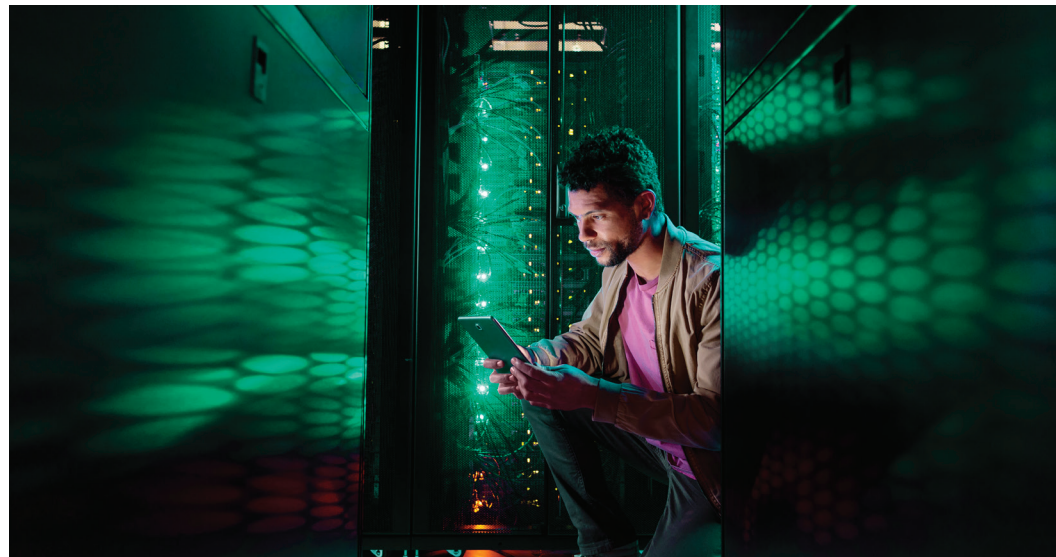




# HPE and Zettaset

## HPE Edgeline & XCrypt Full Disk

Working together. Accelerating results.



### Partnering for IoT Security

Hewlett Packard Enterprise and Zettaset are collaborating to secure data at the edge through the integration of enterprise grade encryption and key management.

When investing in new technology, you need to know that the pieces work together. They need to be tested to provide rich functionality, quickly and effectively, so you can concentrate on your business needs.

HPE and Zettaset understand this, and have performed rigorous testing of ESP with Edgeline. In addition, Zettaset is a member of the HPE Technology Partner program, an industry-leading approach for integrated technologies.

Together with Zettaset, HPE has the right tools, processes, and resources to help our customers transform analytics at the edge to speed insights across the organization.

### Product overviews

**XCrypt Full Disk:** XCrypt Full Disk is a high-performance, scale-out, encryption solution ideal for IoT environments with large volumes of structured and unstructured data. The all-software approach provides both data-at-rest and data-in-motion encryption and simplifies deployment in distributed IoT architectures. XCrypt Full Disk utilizes advanced encryption and access control technologies to ensure the highest levels of protection for sensitive business and regulated information. With the ability to



## Product brochure

seamlessly separate encryption keys from the encrypted data residing on IoT Edge Devices and Gateways, XCrypt Full Disk allows for a more secure method of key management and policy control compared to current embedded platform IoT key storage solutions.

### HPE Edgeline

HPE Edgeline Converged Edge Systems enable true edge computing. In a single enclosure, they provide unprecedented high performance compute, precision data, data center-class security, and Integrated Lights Out (iLO) systems management. These industrial-grade network edge devices can withstand operating environments typically found in Industrial Internet of Things (IoT) edge to deliver secure, uninterrupted connectivity and compute. Upgradability and I/O options provide a strong foundation for your future IoT plans, enabling you to expand your IoT infrastructure beyond the confines of traditional data center. Edgeline Converged Edge Systems:

- Provides legacy manufacturing integration for predictive maintenance
- Delivers real time analysis and condition monitoring
- Allows real time monitoring and control

- Expedites Data management and video analytics
- Helps in asset monitoring and management
- Enables the Intelligent edge workspace

### About Zettaset

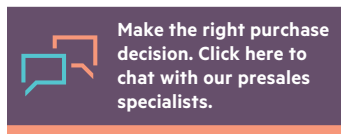
Zettaset provides a software-defined encryption solution designed for securing and protecting data in virtualized and physical environments. With its broad applicability across cloud, on-premise and IoT deployments, Zettaset's high performance encryption can scale throughout distributed architectures where data is created, processed and stored. With the growing adoption of hyperconverged infrastructures, container technologies and multicloud deployments, Zettaset's platform agnostic software enables organizations to centrally control encryption policies throughout any type of virtualized, hybrid or heterogeneous architectures. With a low TCO and ease of use that allows any IT admin to install, deploy and manage encryption processes, Zettaset provides a comprehensive cryptographic solution without the complexity, business interruption or performance degradation associated with legacy appliance based offerings.

Cyberattack and data breach exposure points exist at all stages of the data lifecycle and these threats put the safety and integrity of data at risk. Compliance with regulatory and security mandates is no longer optional, but fundamental to the protection of sensitive data. With the growing reliance on analytics as the compass for critical decisions, Zettaset provides the vital security paramount to maintaining compliance and data integrity necessary for an organization to create value and execute on their strategic goals.

### About Hewlett Packard Enterprise

Hewlett Packard Enterprise is an industry-leading technology company that enables customers to go further, faster. With the industry's most comprehensive portfolio, spanning the cloud to the data center to workplace applications, our technology and services help customers around the world make IT more efficient, more productive, and more secure.

Learn more at  
[hpe.com/partners/technology](https://hpe.com/partners/technology)



Sign up for updates

